

Produced and published by:

Tamakawa Village Tourism and Local Products Association at Tamakawa-mura, Ishikawa-gun, Fukushima Pref.

9 Naka-nawate, Odaka, Tamakawa-mura, Ishikawa-gun, Fukushima Pref. 963-6392 Japan
Tel:0247-57-7230 Fax:0247-57-7231



The Association's website



Instagram



Travel guidebook of
Tamakawa Village
in Fukushima Prefecture



Traveling Tamakawa

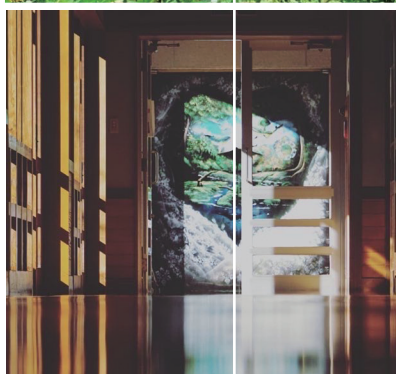
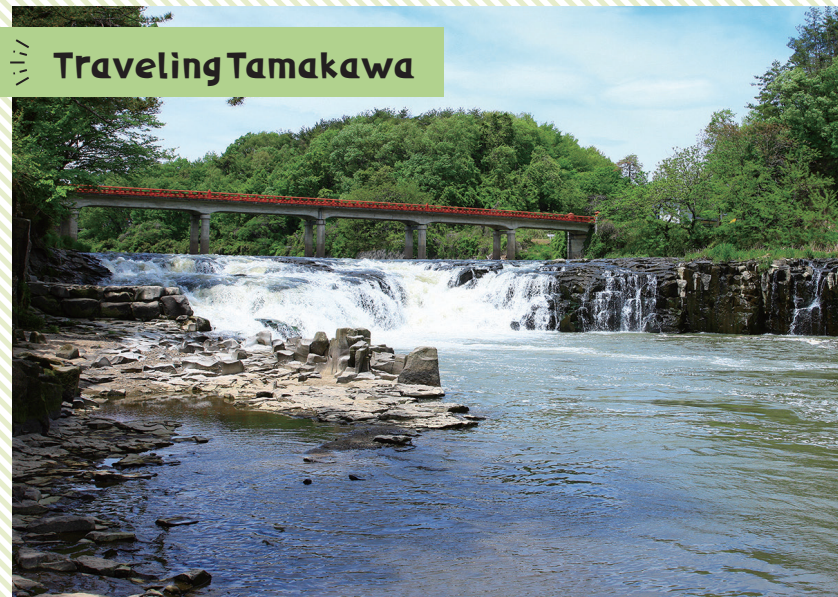
Sharing the joy of
traveling Tamakawa
together with you



Rich and abundant nature
Encounter only possible in this village

Relaxing time you cannot
experience anywhere else





Tamakawa Village lies in the heart of the mountains where layers of the lush greenery of the forest overlap. It is a small village in an area of 10 square kilometers, stretching 11.3 km from east to west and 9.2 km from south to north, but it is also known as a “village with flights” because it can be reached from the Kansai region in about an hour by air.

In the land cultivated over a long period of time, people have lived there with mountains and forests. Beautiful natural scenery changes its look as one season changes to another.

Delicious agricultural products, such as rice, vegetables, fruits, and rare wild fruits, grown in climate and natural features with a large temperature difference. Solemn festivals that have been passed down for generations, a warm lifestyle, and culture. By combining the attractiveness one by one, new travel pleasures are being born one after another, including various activities engaged in the forest and by the waterside, and healing spots and workcation bases where you can soak in a life in Satoyama.

Let's
travel to
Tamakawa
Village.



Tamakawa
Village PV
on YouTube

Welcome to Tamakawa Village.

Tamakawa Village is blessed with the abundant nature of the Abukuma Mountains and is close to the crossing points for major transportation, such as Fukushima Airport, the Tohoku Expressway, the Ban-etsu Expressway, and the Tohoku Shinkansen, which allows the village to be smoothly accessed from all directions.

From the moment you arrive at Tamakawa, you are warmly welcomed by fresh air and spectacular seasonal landscapes. You will be greeted with a variety of sceneries: clear water landscapes that include the Higashino Clear Stream flowing with small splashes of water, and a scenic spot, the Otsujigataki Falls; flowery landscapes of Konpirazakura (cherry trees) and Yukarinomori Park; in summer, the cool sound of water, greenery, and dramatic night views filled with stars; and in autumn when leaves turn red and yellow, festival music resounding like inviting a winter in white to come.

Travel in Tamakawa is the one and only. Fully enjoy an encounter you can have only here and a luxury time you cannot experience in any other place.



Higashino Clear Stream

Higashino-jinai, Shinden, Yotsutsuji,
Tamakawa-mura, Ishikawa-gun, Fukushima



Fukushima Airport

21 Habakita, Kitasugama, Tamakawa-mura, Ishikawa-gun, Fukushima



Konpirazakura

62 Nakamukai, Tamakawa-mura,
Ishikawa-gun, Fukushima



Lit-up Otsujigataki Falls

Takiyama-jinai, Tatsuzaki,
Tamakawa-mura, Ishikawa-gun, Fukushima





The whole village is a playground for fun!

Plenty of outdoor activities, including camping, picnicking, mountain biking, skateboarding, and crafts workshops, are available in the natural environment of Tamakawa and the airport, which is quite rare in Japan!

Tamakawa Tourism Exchange Center: Forest Station yodge

Let's free your mind and five senses with the experience you can have only in Tamakawa Village! Leveraging nature and the ingredients unique to Tamakawa Village, we offer a variety of content mainly related to foods and the outdoors.

Camping and campfires

While enjoying the silence and darkness, the stars twinkling in the night sky, flickering flames, and the crackling sound of a bonfire, you will warm up your body and soul, and your heart will be healed. You can enjoy everything empty-handed because the gear and goods are available for sale and rental use.



Tent sauna starting at 5,000 yen per person for one group (up to four persons)

*Additional fees may be applied during the peak season.

An outside air bath, where you tune your body and collect yourself, and get away from your daily routine, as well as an opportunity to smell the forest and feel the Satoyama, an undeveloped woodland near the village. Feel the place that has been woven with people's thoughts and spend the time that makes you feel enriched.

- Baking Baumkuchen (for 2 hours) 1,500 yen/person
- Having a barbecue (for 3 hours) 5,000 yen/person
- Making a pizza (for 2 hours) 2,000 yen/person

★ You can bring your own ingredients and drinks (1,000 yen/person).



Yodge wedding

Special outdoor wedding only possible at the Yodge. We will create a chapel just for the two of you.



At the café surrounded by the forest, you can enjoy hamburger steaks, bisque curry, and lunch dishes and desserts with only seasonal ingredients.



Address	131 Muranaka, Yotsutsuji-shinden, Tamakawa-mura, Ishikawa-gun, Fukushima
Telephone	0247-57-7440
Opening hours	11:00 a.m. to 6:00 p.m. (opening hours for the café) For information on experience-based activities, please contact us.
Closed day	None



Scan the QR code for more details.

Cycle Village Tamakawa

From food tours to various trial rides to trail rides.

Why not enjoy the charms of Tamakawa Village while admiring amazing landscapes in each of the four seasons?

Electric bicycles are also available for rental use. As a certified staff guides you along, even a beginner can feel at ease with the activities.



Airport trail

As seen on TV and in the media!

You can have an experience at the side of an airport runway as if you were running alongside the planes taking off and landing.

Various experiential tours

We offer a variety of experience-based activities that the whole family can enjoy, including harvesting the local specialties of blueberries and hardy kiwi. Many of the activities are available for a limited time only. Visit the official website for more details!

Ganpoji trail

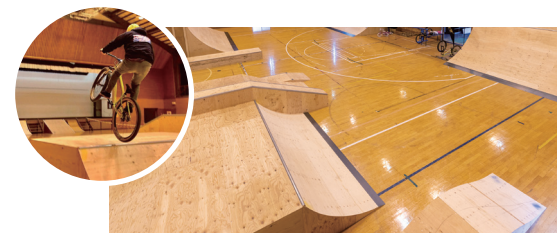
A trail with a total length of 7 km, including inside the airport. A wide variety of courses and unique certified guides! They will guide you along depending on your preference and skills.



▲ Road bikes, cross bikes, and mountain bikes, including the popular Scott electric bikes, are available for rental use!

Urban Sports Tamakawa

A facility where you can enjoy bicycle motocross (BMX), skateboarding, and in-line skating. Installed are mini runs, bank-to-bank, quarters, and mini-quarters, where everyone from children to adults can have fun. Helmets, protectors, skateboards, BMX, and in-line skates are available for rental use as well.



Contact and booking: Cycle village Tamakawa and Urban Sports Tamakawa

Address	205-3 Donouchi, Minami-sugama, Tamakawa-mura, Ishikawa-gun, Fukushima	<Returning locations for rental bicycles > ● Kobushi-no-Sato, Roadside Station Tamakawa ● Fukushima Airport ● Sugama Plaza Co-working Space Tamakawa ● Forest Station Yodge
Email	cyclevillagetamakawa@gmail.com	
Opening hours	9:00 a.m. to 5:00 p.m.	
Closed day	Tuesdays	



Official LINE 310undgb



Scan the QR code for more details.

Trail tours must be booked at least three days in advance.

Let's do Workcation in Tamakawa!

The charm of Tamakawa Village lies in its tranquil nature, which soothes your soul, and the smooth accessibility to urban areas. This village is the perfect environment for doing office jobs while enjoying nature and relaxing away from the hustle and bustle of the city.

Sugama Plaza Community Center (Co-working Space Tamakawa)

With the concept of working, living, playing, and learning, Sugama Plaza Community Center is utilized as Co-working Space Tamakawa, Office Space, and Sugama Administrative Center. The space is full of nature and has been created through the renovation of an old Sugama Junior High School, which has been closed, and provides a comfortable work environment. It has private rooms, Japanese-style rooms, a music room, a home economics room, and a gymnasium. You can also take your children along when using the facilities.

Address 290 Okudaira, Minami-sugama, Tamakawa-mura, Ishikawa-gun, Fukushima
Telephone 0247-57-2104
Openin ghours 8:30 a.m. to 5:15 p.m.
Closed day None

Scan the QR code for reservations.▶



Recommended for those who want to improve the efficiency of work by refreshing body and mind!!



Freshly picked fruits. So delicious and superb!

Harvesting experience at a farm for your free time!

On your days off between summer and fall, we recommend having the experience of picking blueberries and baby kiwi at farms in the village! You can enjoy the fresh taste of the season while chatting with the farm staff.



Experience of picking blueberries (from the middle of June to late August)

Several types of trees are planted in the farm and are grown organically with a lot of affection. You can enjoy picking blueberries, while looking for your favorite flavor, such as sweet varieties and sour-sweet varieties.

All-you-can-eat in the farm with one pack of blueberries

- Fees/1,000 yen/person
- Opening season/ from late June to early August
Opening hours: 9:30 a.m. to 4:00 p.m.
- Additional to-go/ From 300 yen/100 g

Experience of picking baby kiwi (from the middle of September to late October)

Baby kiwi is one of the specialties of Tamakawa Village and is called the legendary super fruit. There are two varieties: Gassan, whose fruits are sweet and rather large, and Issai, whose fruits are sour and rather small. You will be taken to the best farm on the day of your reservation according to the harvesting condition.

Reservations and inquires for picking experiences: Tel: 0247-57-7230



Fukushima Airport

Air gateway of Fukushima, sitting between Tamakawa Village and Sukagawa City. Two routes from/to Fukushima and Sapporo (New Chitose Airport) and Osaka (Itami Airport) are in service. The accessibility is outstanding, as it is only a seven-minute drive from the terminal building of the airport to the center of Tamakawa Village.



▲As there are many spots and shops including souvenir shops, restaurants, an indoor play area (Wakuwaku Land Tamakawa), and a spectator's and observation deck, you can have fun even in the airport building.

Fukushima Airport Building Co., Ltd.

Address 21 Habakita, Kita-sugama, Tamakawa-mura, Ishikawa-gun, Fukushima
Telephone 0247-57-1511



Scan the QR code for more details.▶

Fukushima Airport Park

You can enjoy a variety of sports and recreational activities with your family and friends at Fukushima Airport Park. Walking events and workshops for craft making are also held through the year.



Air front area

You can take a leisurely walk in the area with seasonal trees and flowers and a Japanese-style garden with a quaint atmosphere, and not notice time passing.



Lush green sports area

There are vast lawns for various sports and artificial turf tennis courts, and the area can be used for a wide range of activities from seriously playing sports, such as futsal, to the familiar exercises of jogging and walking.

Fukushima Airport Park Management Office

Address 174-16 Sekibayashi, Tanaka, Sukagawa-shi, Fukushima
Telephone 0248-89-1766

Scan the QR code for more details.▶



Outdoor activity area

This is an area full of nature where you can lie on the grass and enjoy seasonal flowers and trees, or you can enjoy a barbecue with your friends in the outdoor activity area.



Children's Station

Children's Station extends around Tamakawa Kuck Forest, a certified children's center. It is a nice place with an outdoor stage, Kuck Doom Tamakawa, and playground equipment where even small children can play without danger. Please come and play here with your children on a sunny day.



Tamakawa Village Community Center

Address 13-3 Ooyaji, Odaka, Tamakawa-mura, Ishikawa-gun, Fukushima
Telephone 0247-57-4632



You will learn about the history and culture of Tamakawa over 1000 years.

It began with the Ishikawa clan, a branch of the Genji clan, and has left footprints of history for over 1000 years. Ancient dances and ceremonies that have been carefully cherished and inherited in each region. Let's start with travel to the history and tradition that have resonated with the seasons coming around and have been connecting people to people.



Main Shrine of Kawabe Hachiman Shrine <Prefectural designated cultural property>

This is an ancient historic shrine that has been worshipped as the guardian deity of the Ishikawa clan, who ruled this area for a long time. The carvings on the beam are overwhelmingly beautiful, and the shrine is considered to have been built during the Keicho era (1596 to 1615) in the early Edo period since the building is made of sturdy chestnut wood.

148-1 Miyanomae, Kawabe, Tamakawa-mura, Ishikawa-gun, Fukushima

Tofukuji Temple

This temple is of the New Shingon sect and is said to have been founded in 810 (the first year of Konin) on land of what is now Nakano, Ishikawa Town. It was moved to Saidensan in Minami-sugama in 1446 but was destroyed in a great fire in later years. Then, it was reconstructed in 1685 and remains standing to the present. There is a stone Buddhist reliquary, which is nationally designated a historic site on the grounds of the temple, and the relics of the monk who founded the temple are kept inside.



Stone Buddhist reliquary at Tofukuji Temple
<Nationally designated historic site>

70 Kubojuku, Minami-sugama, Tamakawa-mura, Ishikawa-gun, Fukushima



Dairai Shrine

It is said that the shrine was founded when Tairano Masatame, the youngest brother of Tairano Masakado, lived here and prayed for the coming of a deity of Karaitenjinn at Kaminari-kawara on the riverside of the Abukuma River. In the Edo period, it was called Karai Shrine and worshiped as the main guardian deity of the area, and even today, it is attracting many worshippers as the "God of Thunder in Odaka."

119 Nishi-yashiki, Odaka, Tamakawa-mura, Ishikawa-gun, Fukushima

Recommended spots to experience the history

Tamakawa Village has many recommended historic spots that offer different scenery depending on the season.



Kashima Shrine for the worship of Takemikazuchi-no-o no kami ("Brave Mighty Thunderbolt Man").

82 Maesakuda, Naka, Tamakawa-mura, Ishikawa-gun, Fukushima



Cedar trees of Kawabe Hachiman Shrine. There is a rare upside-down cedar tree on the grounds of the shrine, too.

148-1 Miyanomae, Kawabe, Tamakawa-mura, Ishikawa-gun, Fukushima

Scan the QR code here.
You can learn more about the history and traditional culture of Tamakawa Village.



The haiku poem monument of Matsuo Basho

Takiyama-jinai, Tatsuzaki, Tamakawa-mura, Ishikawa-gun, Fukushima



Odera Castle Ruins Park

Minamijuku-jinai, Minami-sugama, Tamakawa-mura, Ishikawa-gun, Fukushima

Traditional culture in Tamakawa Village that highlights each season

Minami Sugama Nenbutsu Odori (dance with Buddhist chanting)
<Important intangible folk culture asset of Fukushima Prefecture>

This is a traditional dance by innocent young girls who wear bright long-sleeved kimonos with flower hats and gauntlets to pray for their ancestors' souls to rest in peace.



Urayasu-no-mai dance

This dance has been preserved and passed down in both the Kawabe and Odaka areas. The dancing has a sacred, solemn, and elegant atmosphere.



Tamakawa Furusatokan museum

Tamakawa Furusatokan exhibits the history and culture of Tamakawa Village, as well as the history of aircraft with illustrations and models. In addition, in the aircraft corner, you can get in a plane on exhibit. You will also have the hands-on experience of making your own paper airplane. This is the museum that everybody from children to adults can enjoy.

Located in the Tamakawa Cultural Gymnasium
71 Ohyaji, Odaka, Tamakawa-mura, Ishikawa-gun, Fukushima
0247-57-4632





Here's what the icons mean

A Address
TEL TelephoneO Openin ghours
C Closed day**Gourmet food information in Tamakawa: traditional local cuisine**

Tamakawa Village has many traditional restaurants offering delicious foods that have been loved by the locals. Community-based, local favorite restaurants that offer a wide variety of foods ranging from set meals, ramen noodles, and sweets to souvenirs are all here. Drop by and enjoy those foods during your travel.

MAP
01**Sushi Munakata**

The owner's all-time favorite seafood bowl. Once you have it, you will understand that the sushi chef is a connoisseur. Try the owner's signature sushi, too.

A 36-3 Kita-nawate, Odaka, Tamakawa-mura
TEL 0247-57-4041
O 11:00 a.m. to 1:00 p.m.
(for lunch only on Tuesdays and Saturdays)
5:00 p.m. to 9:00 p.m.
C Mondays

MAP
03**Marvelous Suehiro**

Very popular are the daily set meals (with complementary coffee), the classic curry and rice, and the limited dishes for Saturdays and Sundays.

A 84 Michiue, Naka, Tamakawa-mura
TEL 0247-57-4388
O 11:00 a.m. to 2:00 p.m.
C Wednesdays
(It may be subject to change depending on reservation status.)

MAP
05**Restaurant Dolce**

Hearty hamburger spaghetti is hugely popular!
No doubt you will be satisfied with it.



A 388 Budo, Kawabe, Tamakawa-mura
TEL 0247-57-3666
O 11:00 a.m. to 2:00 p.m.
(Only open for lunch time on Tuesdays.)
5:00 p.m. to 7:45 p.m. (for last orders)
C Wednesdays and a dinner time on Tuesdays

MAP
02**Delicafe Poele**

By using vegetables directly delivered from local farmers, which allows the restaurant to know the producers, Delicafe Poele serves healthy, homemade, and creative dishes.

A 389 Budo, Kawabe, Tamakawa-mura
TEL 0247-57-9020
O 10:30 a.m. to 5:00 p.m.
C Tuesdays and every other Wednesday
*Closed between October and January)

MAP
04**Hand-kneaded Chinese noodles Torichu**

After repeated trials and errors, the owner who loves ramen noodles has finally achieved his ideal light-taste soup broth. You can finish the soup to the last drop.

A 280-3 Okudaira, Minami-sugama, Tamakawa-mura
TEL 080-6004-4257
O 11:00 a.m. to 2:00 p.m. (for lunch)
5:00 p.m. to 8:00 p.m. (for dinner) (7:30 p.m. for last orders)
C Mondays

MAP
06**Restaurant Sharon (at Fukushima Airport)**

The crispy pork cutlet with homemade sauce based on baby kiwi, a specialty of Tamakawa Village, and local vegetables are the perfect match. Try and enjoy it, please.

A Fukushima Airport 2F, 21 Habakita, Kitasugama, Tamakawa-mura
TEL 0247-57-1580
O 7:00 a.m. to 6:00 p.m.
(subject to change depending on flight status)
C None

MAP
07**Kakuta Seimen**

The chewy homemade noodles make the best match with original miso and domestically produced ginger. You will become addicted to it.

A 26-7 Harasakuda, Tatsuzaki, Tamakawa-mura
TEL 0247-57-3688
O 11:00 a.m. to 2:30 p.m. (for last orders)
C Mondays
(The restaurant will close when ingredients run out)

MAP
09**Restaurant Bon Marché**

A good-old diner. They are particular about serving homemade dishes such as spaghetti, pilaf, hamburger steak, and pizza.

A 371-1 Harasakuda, Tatsuzaki, Tamakawa-mura
TEL 0247-57-3995
O 11:00 a.m. to 3:00 p.m.
11:00 a.m. to 2:00 p.m. (for lunch menu)
C Wednesdays

MAP
11**Tsubaki Ramen Shop, Tamakawa**

The taste of the foods remains unchanged since this ramen shop opened in 1982. Noodles are homemade and use a soup made with pork bones, kelp, and several kinds of vegetables as well as a secret soy-based sauce.

A 28-2 Michiue, Naka, Tamakawa-mura
TEL 0247-57-4515
O 8:00 a.m. to 1:00 a.m.
on the following day from Monday to Saturday
11:00 a.m. to midnight on Sundays and national holidays
C January 1 and December 31

MAP
08**Kugiya Shoten**

A long-established noodle-making factory founded 130 years ago. The semi-dried noodles that they carefully manufacture, taking the time to dry them naturally, offer a smooth texture.

A 35-4 Yashiki-mae, Naka, Tamakawa-mura
TEL 0247-57-2026
O 8:00 a.m. to 6:00 p.m.
C Irregularly

MAP
10**Yuzawa Confectionery Shop**

A popular Japanese and Western confectionery shop offering cookies, baked goods, and seasonal limited sweets. Please contact the shop for its business days because it is closed irregularly.

A 64-1 Nakamura-mae, Odaka, Tamakawa-mura
TEL 0247-57-2133
O Irregular
C Irregular

MAP
12**Juraku**

This restaurant offers various dishes that have been loved for a long time, such as the popular spaghetti flavored with tomato ketchup (called spaghetti Napolitan).

A 15-1 Minami-nawate, Odaka, Tamakawa-mura
TEL 0247-57-3487
O 11:00 a.m. to 8:30 p.m.
C Irregularly



MAP
13



Kohara Butcher's Shop

Their specialty is handmade minced meat cutlets, which are so popular that customers even come for this specialty from far away.

A 48-1 Kita-nawate, Odaka, Tamakawa-mura
TEL 0247-57-2264
O 9:00 a.m. to 7:00 p.m.
C Wednesdays



MAP
14



Monpéllie Tamakawa, Kumada Store

About 40 kinds of freshly baked breads are lined up every day. As seasonal ingredients are used, you can enjoy different varieties of bread all through the year.

A 318-1 Nakaoki, Kawabe, Tamakawa-mura
TEL 0247-57-4208
O 7:00 a.m. to 8:00 p.m.
C None



MAP
19



Fresh Katoya

All dishes offered, from sashimi platters to side dishes, are delicious and filling.

A 303-1 Nakaoki, Kawabe, Tamakawa-mura
TEL 0247-57-2013
O 9:00 a.m. to 8:00 p.m.
C Irregularly



MAP
20



Ramen Hibiki

The broth is smooth and made with chicken bones, pork bones, and vegetables. Chewy and springy, handmade medium-thick curly noodles are used.

A 67 Yanagisaku, Minami-sugama, Tamakawa-mura
TEL 080-1801-9254
O 11:00 a.m. to 2:30 p.m. on weekdays
 11:00 a.m. to 3:00 p.m. on weekends
C Tuesdays and Wednesdays
 (It may temporarily open on Wednesday.)



MAP
15



Confectionery Studio Iwakiya

The fresh-from-the-oven puff is filled cream only after an order is placed. Baby kiwi daifuku (rice cake stuffed with sweet beans and baby kiwi) is also great!

A 78-3 Minami-nawate, Odaka, Tamakawa-mura
TEL 0247-57-2109
O 8:00 a.m. to 8:00 p.m.
C the 2nd and 4th Tuesdays



MAP
16



Cake & Café fon

Chiffon cakes are very popular, and more than 10 varieties are available every day. A dessert combo with café latte is also popular!

A 154 Ikeshita, Kawabe, Tamakawa-mura
TEL 0247-57-4422
O Take-away from 10:30 a.m. to 6:00 p.m.
 Lunch from 11:00 a.m. to 2:00 p.m.
 Café services from 11:00 a.m. to 5:00 p.m.
C Mondays, and the 2nd and 4th Tuesdays



MAP
21



Abukuma Highlands Soba Restaurant (inside the Kobushi-no-Sato)

Authentic handmade soba noodles made with local buckwheat flour from Tamakawa Village. The smooth texture and aroma of these noodles are superb such that even soba connoisseurs marvel at them.

A 140-2 Miyanomae, Ganpoji, Tamakawa-mura
TEL 0247-57-3800
O 11:00 a.m. to 3:00 p.m.
C January 1



MAP
22



Uohide

A fresh fish specialty store whose fresh sashimi can be recommended. Sashimi is made to order.

A 18-2 Okudaira, Minami-sugama, Tamakawa-mura
TEL 0247-57-3105
O 9:00 a.m. to 7:00 p.m.
 (Reservations for lunch and dinner party are accepted for six people or more. Takeout orders require reservations at least two days in advance.)
C Mondays



MAP
17



Tagosho Foods Co., Ltd. Hinomarutei, Tamakawa Store

The recommended dish is fried chicken that is cooked by marinating locally produced raw chicken meat thoroughly in this catering company's secret sauce.

A 15-3 Minami-nawate, Odaka, Tamakawa-mura
TEL 0247-57-4541 (also served as a facsimile)
O 8:30 a.m. to 8:00 p.m.
 (8:30 a.m. to 2:00 p.m. only for Wednesdays)
C January 1 to 3, and August 13 to 15



MAP
18



Onigiri Lab

Onigiri with the fillings peeking out allows you to recognize what ingredients are used inside the rice ball. Large-grained Koshihikari rice from Tamakawa Village, which is delicious even when cold, is cooked light and fluffy in soft water to make these rice balls.

A 140-2 Miyanomae, Ganpoji, Tamakawa-mura
 (Challenge Shop located on the premises of Kobushi-no-Sato, Roadside Station Tamakawa)
TEL 0247-57-4629
 (at Industry Promotion Division of Tamakawa Village Office)
O 10:00 a.m. to 4:00 p.m.
 (The shop will close when products are sold out.)
C Mondays (except for national holidays on Monday)



MAP
23



Amaterasse (at Fukushima Airport)

A restaurant where you can see the planes. We can accommodate requests for French cuisine and course meals inspired by Fukushima.

A Airport building 3F, 21 Habakita, Kita-sugama, Tamakawa-mura
TEL 0247-57-7670
O 11:00 a.m. to 3:30 p.m.
C None *Please contact us before visiting.



MAP
24



Tama-chan Shokudo

With the motto of "Must be inexpensive and delicious! All at or less than 500 yen!"—we offer our dishes at low prices. Customers who come just for a meal are more than welcome.

A 116-2 Arayashiki, Ganpoji, Tamakawa-mura
TEL 0247-57-4218
O 11:30 a.m. to 6:30 p.m. on weekdays
 11:00 a.m. to 6:30 p.m. on weekends
C Corresponding to the closed day of the Boatrace Ticket Shop





Take Tamakawa gourmet foods home!

Taking geographical advantage of the difference in elevation of 400 meters and the temperature difference of 7 degrees Celsius in Tamakawa Village, the producers have developed local gourmet foods through their wisdom and skills. Enjoy the excellent taste of unique vegetables grown from the highlands to the plains, which you cannot find anywhere else!



Original products from
Tamakawa Village

So many products are available, including 100% baby kiwi juice and baby kiwi soft drinks, baby kiwi curry and dressing, various kinds of jams and compotes, Koshihikari rice from Tamakawa Village, and Shonin miso!



Baby kiwi sable and baby kiwi pudding

A slightly sour, flaky cookie made with a dough into which baby kiwi is kneaded and then dried fruits are added. Meanwhile, the pudding is made with so much baby kiwi puree that you can taste the subtle aroma and the rich sweetness of baby kiwi.

Shibori (dry-farmed) tomatoes

From among tomatoes that have been grown through dry farming, a special method to generate the sweetness of tomatoes not by watering but with their natural power, the ones with a sugar content of 7 degrees or higher are carefully selected to produce luxurious 100% tomato juice finished without salt or additives. You can savor the natural flavor of tomatoes.



Chinese water spinach

Chinese water spinach from Tamakawa Village, grown by special organic mineral cultivation method that starts with considering soil preparation, is highly nutritious and has a characteristic crisp texture. The plain taste goes well with any dish. Rice crackers, bean sweets, and udon noodles into which Chinese water spinach is kneaded are also received favorably.



Baby kiwi

It is the original species of kiwifruit, and the superfood of fruits rich in vitamins. It was named saru-nashi (monkeys gone) in Japanese because baby kiwi is so delicious that monkeys eat it until it is all gone. We recommend the fruit itself as well as its processed products of juice, sparkling wine, and curry.



Blueberries

Blueberries are considered good for the eyes because they contain anthocyanin, a type of polyphenol. Tamakawa Village grows blueberries on about two hectares without pesticides. Blueberries are great in various ways since we can eat them as are and use them as toppings. Jams and syrups are also popular and can be consumed safely by small children.



These are the very places where you buy souvenirs of Tamakawa Village!



Kobushi-no-Sato Center, Roadside Station Tamakawa

Fresh vegetables and local specialties from Tamakawa Village are safe and trustworthy because you can learn who grows and produces them! The producers of Tamakawa Village bring fresh vegetables, local specialties, and side dishes directly to offer them at low prices. In addition, demonstration sales of handmade soba noodles made with buckwheat flour from Abukuma are conducted, and soft serve ice cream made with Chinese water spinach and baby kiwi are available only during the summer.

Address 140-2 Miyanomae, Ganpoji, Tamakawa-mura,
Ishikawa-gun, Fukushima
Telephone 0247-57-3800
Openin' hours 8:30 a.m. to 6:00 p.m.
Closed day January 1



Plenty of fresh
seasonal vegetables!

Fukushima Airport Service, Fukushima Airport Store

A full lineup of ingredients, folkcrafts, and goods of Fukushima!

[Folkcrafts section]

A wide selection of Fukushima's folkcrafts. The store also carries Aizu lacquerware produced in the Aizu region and Fukushima's folkcraft of Akabeko and Miharukoma.

[Alcoholic drink section]

The store has a variety of carefully selected alcoholic drinks made in Fukushima.

[Ultraman section "SHOT M78"]

Sukagawa City, adjacent to Tamakawa Village, is the hometown of the director Eiji Tsuburaya, the creator of Ultraman. This section has an adjoining Ultraman official shop, SHOT M78, which offers a variety of merchandise so that everyone from small children to adults can have a good time here.

Address Domestic Terminal Building 2F, 21 Habakita, Kita-sugama,
Tamakawa-mura, Ishikawa-gun, Fukushima
Telephone 0247-57-1650
Openin' hours 7:00 a.m. to 6:15 p.m.
Closed day None



*Please check the latest information on the Fukushima Airport website.



Fukushima Ippindo

This shop carries a wide range of goods that include seasonal sakes, which are rare even in Fukushima Prefecture as well as unusual groceries (the 6th industrialized products) by Fukushima Mantendo. There is also a section of Sky Station Tamakawa, where products from Tamakawa are available. You can buy specialties and vegetables of Tamakawa Village at the airport.

Address Domestic Terminal Building 1F, 21 Habakita, Kita-sugama,
Tamakawa-mura, Ishikawa-gun, Fukushima
Telephone 0247-57-1511
Openin' hours 7:00 a.m. to 6:00 p.m.
Closed day None



*Please check the latest information on the Fukushima Airport website.



**Stay in the village.****Relaxing stay in Tamakawa,
which makes traveling people happy**

Pure white clouds floating in the blue sky. A holiday that heals you with clear air, the sound of the leaves of trees rustling in the wind, and the pleasant smiles of those who welcome you. That is the charm of a stay in Tamakawa.

In the village, Tamakawa has three bases where you can relax during your stay, have fun while playing, and enjoy locally produced gourmet foods. Come and stay any time and as many times as you like according to the purpose and the season of your travel, from outdoor leisure and the experience of spectacular views to a heartwarming onsen trip and workcation. Enjoy a relaxing time in Tamakawa that makes travelers happy.



Tamakawa Tourism Exchange

Center Forest Station yodge

This is an accommodation base renovated from the former Yotsuji Branch School founded in 1910. You can feel the precious memories of the local community the way it was then through the exposed beams and high ceilings, the five guest rooms that retain traces of the old classrooms, and the café renovated from the old music/exercise room. Since there are also a trailer house and campsite on the grounds of the facility, it is recommended for those who want to experience the outdoors as well.

Accommodation fee

- Overnight stay without meals
Starting from 11,000 yen/person
- Overnight stay in the trailer
without meals
Starting from 26,000 yen/person
- One tent on the tent site (overnight)
 - In the schoolyard Starting from 5,000 yen/person
 - At the car camping site Starting from 7,000 yen/person

*Various plans are available that include a day trip, overnight stay with meals and workshop, training camp/company retreat, and long-term stays.
An additional management fee is applied. Please contact the inn for more details.

- Check-in from 3:00 p.m. to 8:00 p.m.
- Checkout 10:00 a.m.

(Tent can be set up from 12:00 p.m.)



Address 131 Muranaka, Yotsutsuji-shinden,
Tamakawa-mura, Ishikawa-gun, Fukushima
Telephone 0247-57-7440

**Okutamakawa Onsen Suwaya**

A comforting inn hidden in the mountains, which accepts only four groups of guests per day. They carefully choose the ingredients so that their guests can enjoy the tastes of the seasons, and thus they change their menu every month. The bath is dedicated to each room, which allows you to enjoy a relaxing time without worrying about other guests.

Accommodation fee

- Limited to four groups per day
Overnight stay with two meals
Starting from 31,000 yen
(the bathing tax not included)
- Various plans are available.
Please contact the inn for more details.

■ Check-in from 3:00 p.m. to 6:00 p.m.

■ Checkout 10:00 a.m.



Address 32 Tsuma, Yotsutsuji-shinden,
Tamakawa-mura, Ishikawa-gun, Fukushima
Telephone 0247-57-2684

Inn for healing and relaxation

Hitachiya Ryokan

The inn for a relaxing long stay in a warm, homely atmosphere and a relaxing space where you do not have to worry about anyone else. In order to offer a comfortable space for guests, the inn will welcome every guest with exceptional hospitality. In addition, the location is ideal for those who would stay for work for a long period as well as those who use Fukushima Airport. The inn constantly changes their menu of dishes to welcome guests with a wide variety of hospitality menu options.

Accommodation fee

- Overnight stay with two meals
Starting from 6,160 yen
- Overnight stay without meals
Starting from 4,000 yen
- Separate estimate will be provided for long-term stays and training camp/company retreats. Please contact the inn for details.

- Check-in from 3:00 p.m.
- Checkout 10:00 a.m.



Address 11-3 Nishi-yashiki, Odaka, Tamakawa-mura,
Ishikawa-gun, Fukushima
Telephone 0247-57-2046



Traveling Tamakawa Tourist Map



Mountain pigeon Kuck-chan, the mascot for Tamakawa Village



We put the various facilities we introduced in this brochure together into the Tourist Map. Enjoy your travel in Tamakawa Village and freely visit the places and spots you are interested in; enjoy the relaxing nature in Tamakawa, delicious gourmet restaurants, interactive facilities introduced in "Enjoy the travel," historic buildings and places introduced in "Go sight-seeing," and the accommodations and souvenir shops introduced in "Stay in the village."

